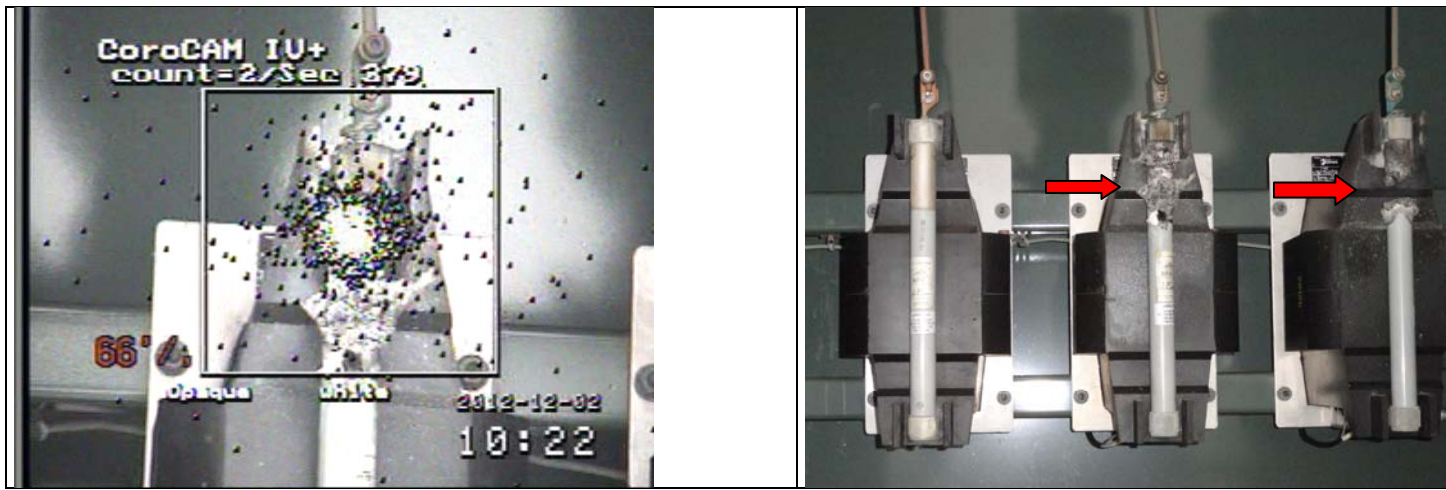


ABSOLUTE INFRARED INSPECTION SERVICES PO Box 9594 Erie, PA 16505 814-397-3382	Thermal Diagnostics Report By: Craig Casler Level III Thermographer Level II ASNT
--	--

Customer:	XXXXXXXXXXXX
Date:	12/3/2012
Location:	Exterior
Equipment:	FGF Switch Gear /Bay #4
Component:	CT
Voltage:	34,500
Amp / Load	N/A
I.D. #	

Thermal Image

Digital Image



Point 1 Temperature	N/A	Ambient Temperature	48
Reference Temperature	N/A	Relative Humidity	88%
Delta Temperature	N/A	Dew Point	44
Db Point 1	44	Altim. / Pressure Hg	1,380 / 29.05
Photons	11,000+	Wind MPH	0-3 MPH

Comments: Corona was detected here. Corrective action needs taken cleaning or replacement of damage components.

Repair Log

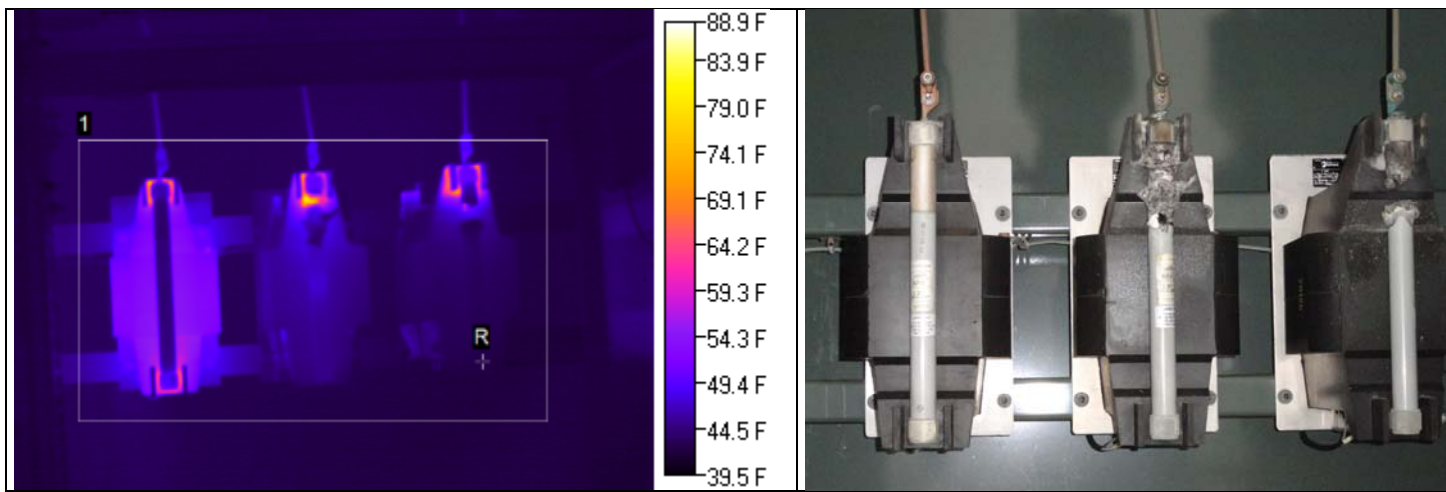
Repair Date	Description	Signature

ABSOLUTE INFRARED INSPECTION SERVICES PO Box 9594 Erie, PA 16505 814-397-3382	Thermal Diagnostics Report By: Craig Casler Level III Thermographer Level II ASNT
--	--

Customer:	XXXXXXXXXXXXXX
Date:	12/3/2012
Location:	Exterior
Equipment:	FGF Switch Gear /Bay #4
Component:	CT
Voltage:	34,500
Amp / Load	N/A
I.D. #	

Thermal Image

Digital Image



Point 1 Temperature	85	Ambient Temperature	48
Reference Temperature	49	Relative Humidity	
Delta Temperature	36	Dew Point	
Db Point 1		Altim. / Pressure Hg	
Photons		Wind MPH	

Comments: Corona in advanced stages will generate heat which may not be resistance related. Arching was responsible for the heat generated in this image.

The CT on the left had not been destroyed by the corona yet but had a high amount of corona on both fuse ends.

Repair Log

Repair Date	Description	Signature